


Prestige
STONE PRODUCTS **LLC.**

Where quality craftsmanship is a way of life...[®]



25

CRAFTSMANSHIP

in every detail

Table of Contents



Blanc Old County Ledge

6-13	Commercial and Residential Applications	46-47	Dressed Ashlar
14-21	Weatherledge	48-51	Southern Limestone
22-27	Old County Ledge	52-53	Midwest Dimensional
28-33	Pro Stack	54-55	Salvaged Wood Stone
34-35	Thin Veneer Brick	56-57	Fieldstone
36-37	Plym Brick	58-64	Accessory Guide
38-41	Ledgestone	66	Installation Guide
42-45	Quarry Cut	67	Warranty

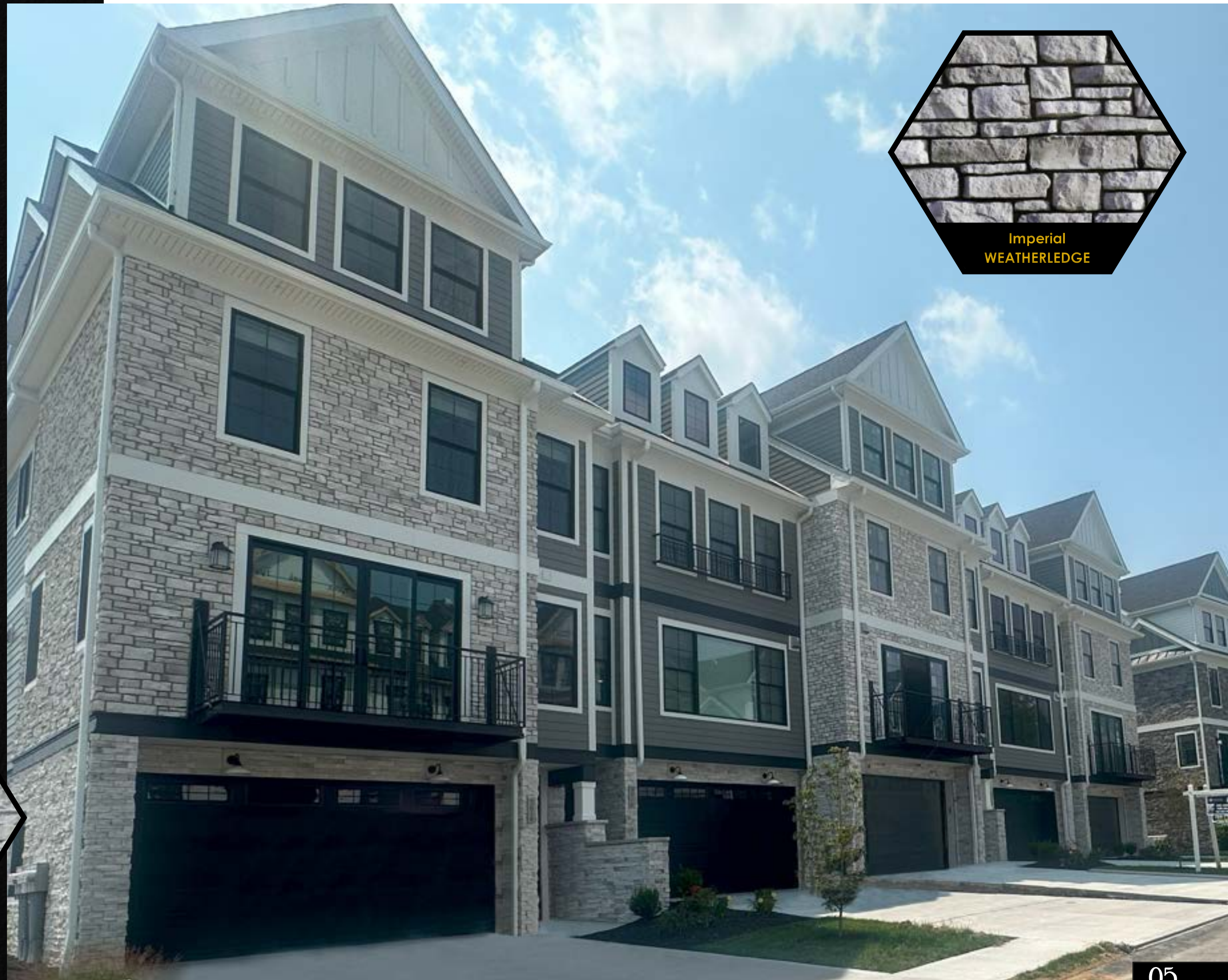
Manufactured Stone Veneer

VS Natural Quarried Stone Veneer

- Not weight bearing, no need for a footer or additional reinforcement and expansion joints
- Competitively priced to be well within budget constraints
- Much larger variety of colors and shapes



Imperial
PRO STACK



Imperial
WEATHERLEDGE

Featured Commercial Applications



Bluegrass LedgeStone and Fieldstone Mix



Pebble Midwest Dimensional

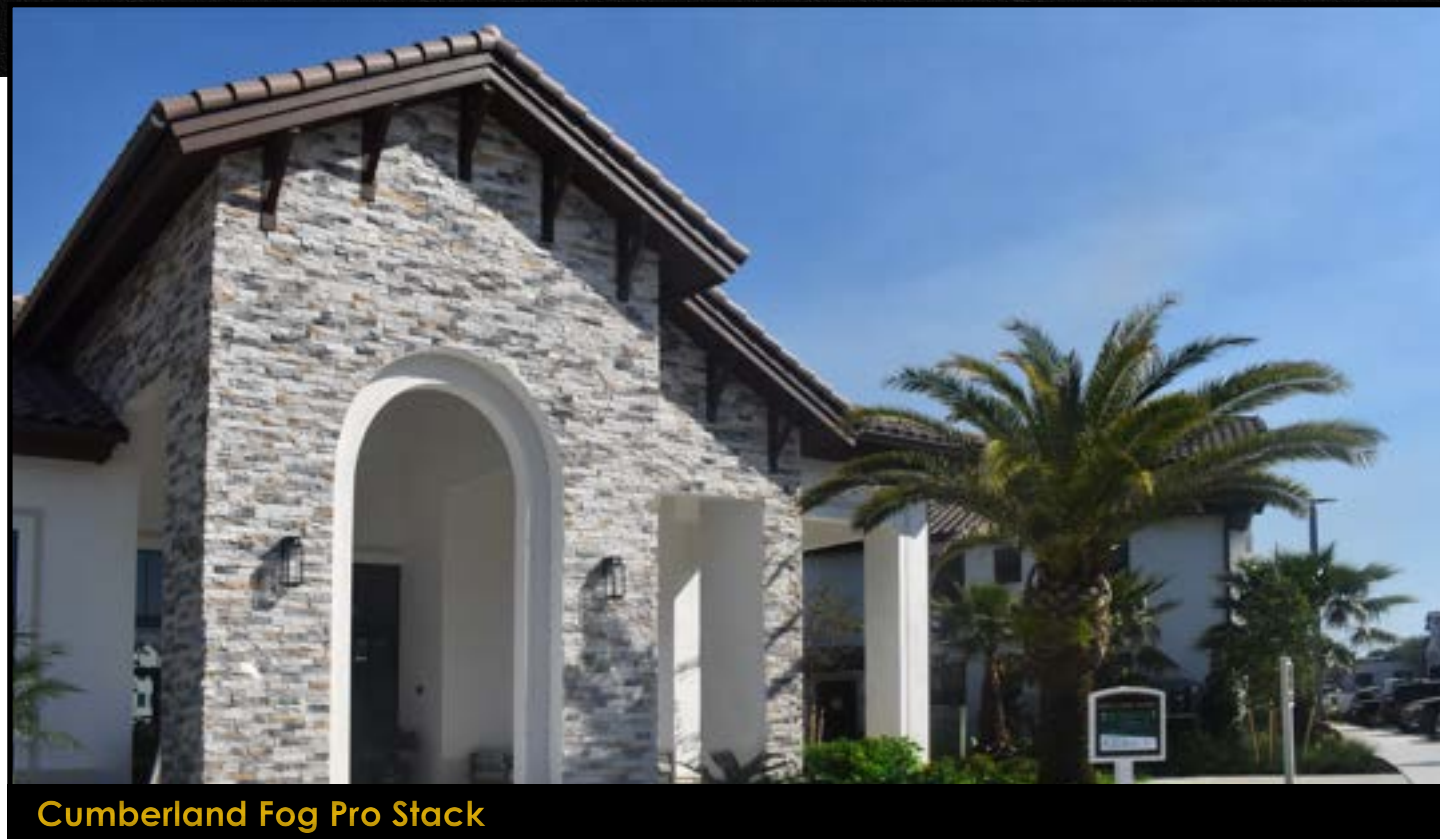


Ohio Southern Limestone



Buck Country Weatherledge

Featured Commercial Applications



Featured Residential Applications



Featured Residential Applications



Weatherledge

DESERT HOLLOW

- The Weatherledge series is an attractive interweaving of stone that will make your next venture stand out.
- Eye-catchingly honed, its style is not as rugged or complex. It is characterized by smoother edges and rectangular pieces that draw you in to its allure.



Kodiak Ridge
WEATHERLEDGE



Desert Hollow
WEATHERLEDGE



Buck Country
WEATHERLEDGE

Weatherledge

BLUEGRASS



Portland Mist
WEATHERLEDGE



Bluegrass
WEATHERLEDGE



Jackson Creek
WEATHERLEDGE



Blanc
WEATHERLEDGE



Imperial
WEATHERLEDGE



- Weatherledge ranges from 1½ inches to 6 inches tall, and 4 inches to 23½ inches long.

Weatherledge

CHARCOAL



Portland Dusk
WEATHERLEDGE



Charcoal
WEATHERLEDGE



Portland Smoke
WEATHERLEDGE



Monterey
WEATHERLEDGE

Weatherledge

HARVEST



Venice
WEATHERLEDGE



Harvest
WEATHERLEDGE



Tan
WEATHERLEDGE



Sequoia
WEATHERLEDGE



Old County Ledge

PORTLAND SMOKE

- With smooth faces and a modern, angular edge, Old County Ledge is the stone of choice for those seeking an orderly look.
- This series is a well-organized combination of varied sizes and texture, but with an undeviating line.



Kodiak Ridge
OLD COUNTY LEDGE



Charcoal
OLD COUNTY LEDGE



Moonlit Forest
OLD COUNTY LEDGE



Portland Dusk
OLD COUNTY LEDGE



Portland Smoke
OLD COUNTY LEDGE

Old County Ledge

BLACK ONYX



Bluegrass
OLD COUNTY LEDGE



Black Onyx
OLD COUNTY LEDGE



Sante Fe
OLD COUNTY LEDGE



Blanc
OLD COUNTY LEDGE



Portland Mist
OLD COUNTY LEDGE



- Old County Ledge ranges in size from 1½ inches to 7 inches tall, by 4 inches to 23½ inches long.

Old County Ledge

SIESTA



Buck Country
OLD COUNTY LEDGE



Siesta
OLD COUNTY LEDGE



Lido
OLD COUNTY LEDGE



Harvest
OLD COUNTY LEDGE



White Onyx
OLD COUNTY LEDGE



Pro Stack

IMPERIAL

- With a modern look that contains clean and contemporary lines, our ProStack brings you the most current style. The panels are uncluttered, long, and straight-edged.
- Simple yet dynamic, this choice of stone gives you the orderly, unfettered look you've been seeking.



Mesa Cream
PRO STACK



Imperial
PRO STACK



White Onyx
PRO STACK



Cumberland Fog
PRO STACK



Pro Stack

PORTLAND MIST



Buck Country
PRO STACK



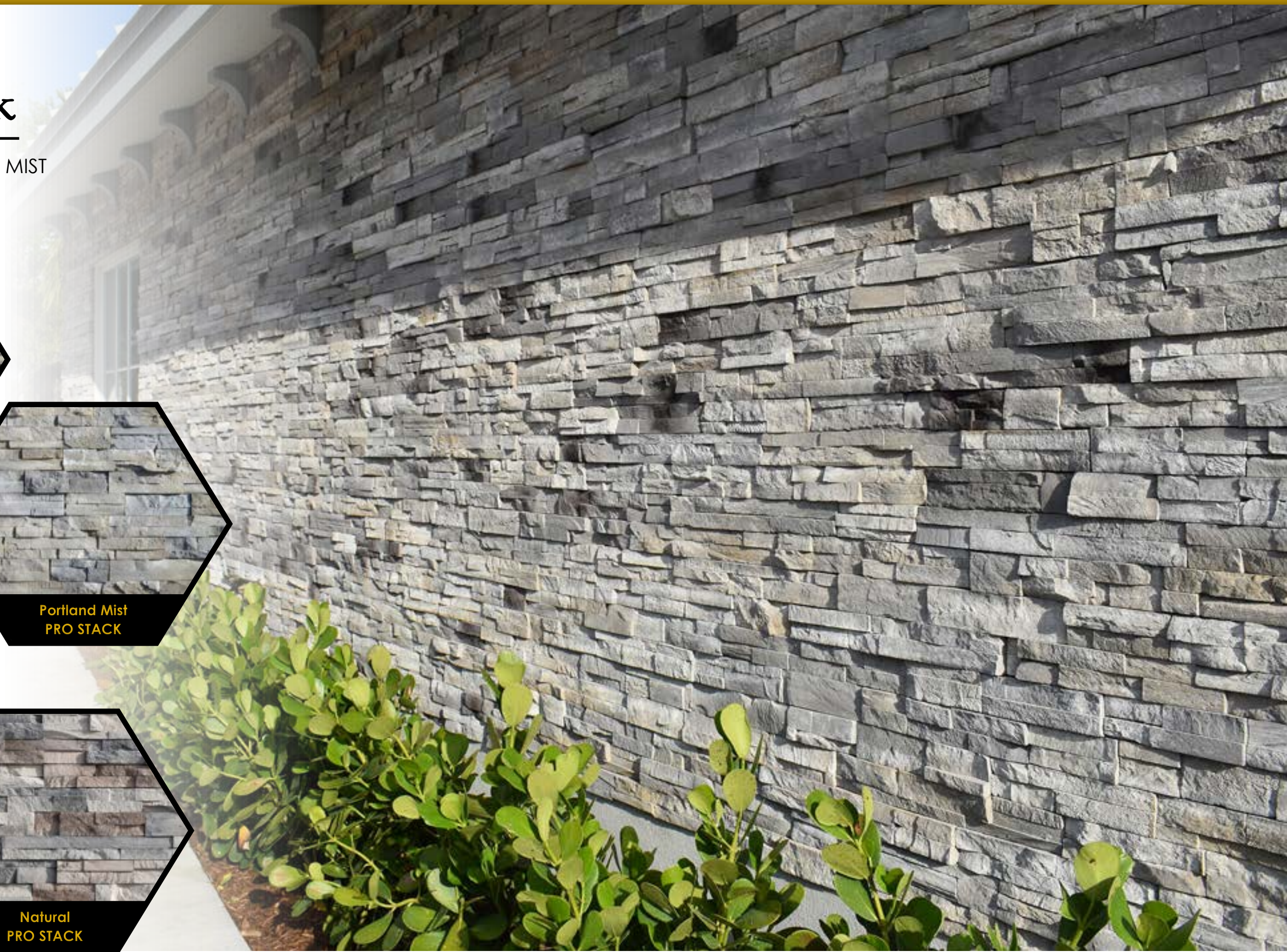
Portland Mist
PRO STACK



Siesta
PRO STACK



Natural
PRO STACK



• Pro Stack panels are 3 inches tall, 6 to 23½ inches long, and 1 inch deep.

Pro Stack

BLACK ONYX



Charcoal
PRO STACK



Black Onyx
PRO STACK



Portland Smoke
PRO STACK



Moonlit Forest
PRO STACK



Thin Veneer Brick

FARMHOUSE

- Thin Veneer Brick is a throwback to when brick was hand-made and unique. For a rustic flair, our brick is perfect on your next project!
- Thin Veneer Brick is 2½ inches wide by 8 inches long by 1 inch deep.



White Onyx
THIN VENEER BRICK

Farmhouse
THIN VENEER BRICK

Mahogany
THIN VENEER BRICK

Black Onyx
THIN VENEER BRICK

Plym Brick

SANIBEL



White Onyx
PLYM BRICK



Sanibel
PLYM BRICK



Luna w/ White Grout
PLYM BRICK



Luna w/ Dark Grout
PLYM BRICK

Plym Brick is a classic look that will complement any modern or traditional style. The staggered layers of veneer brick have lovely textured edges. With a visible mortar backdrop and slight color variations in the stone, this veneer is perfect for those looking for a natural and softened look.



Ledgestone

BUCK COUNTRY

- The Ledgestone series lends abundant character to any project. Rustic with varying depths, the texture is an appealing mix that pleases the eye. Jagged and tapered pieces abound, grasping the essence of the natural ledgestone we mold.



Kodiak Ridge
LEDGESTONE

Buck Country
LEDGESTONE

Bluegrass
LEDGESTONE

Charcoal
LEDGESTONE

Ledgestone

MONTEREY



Desert Hollow
LEDGESTONE



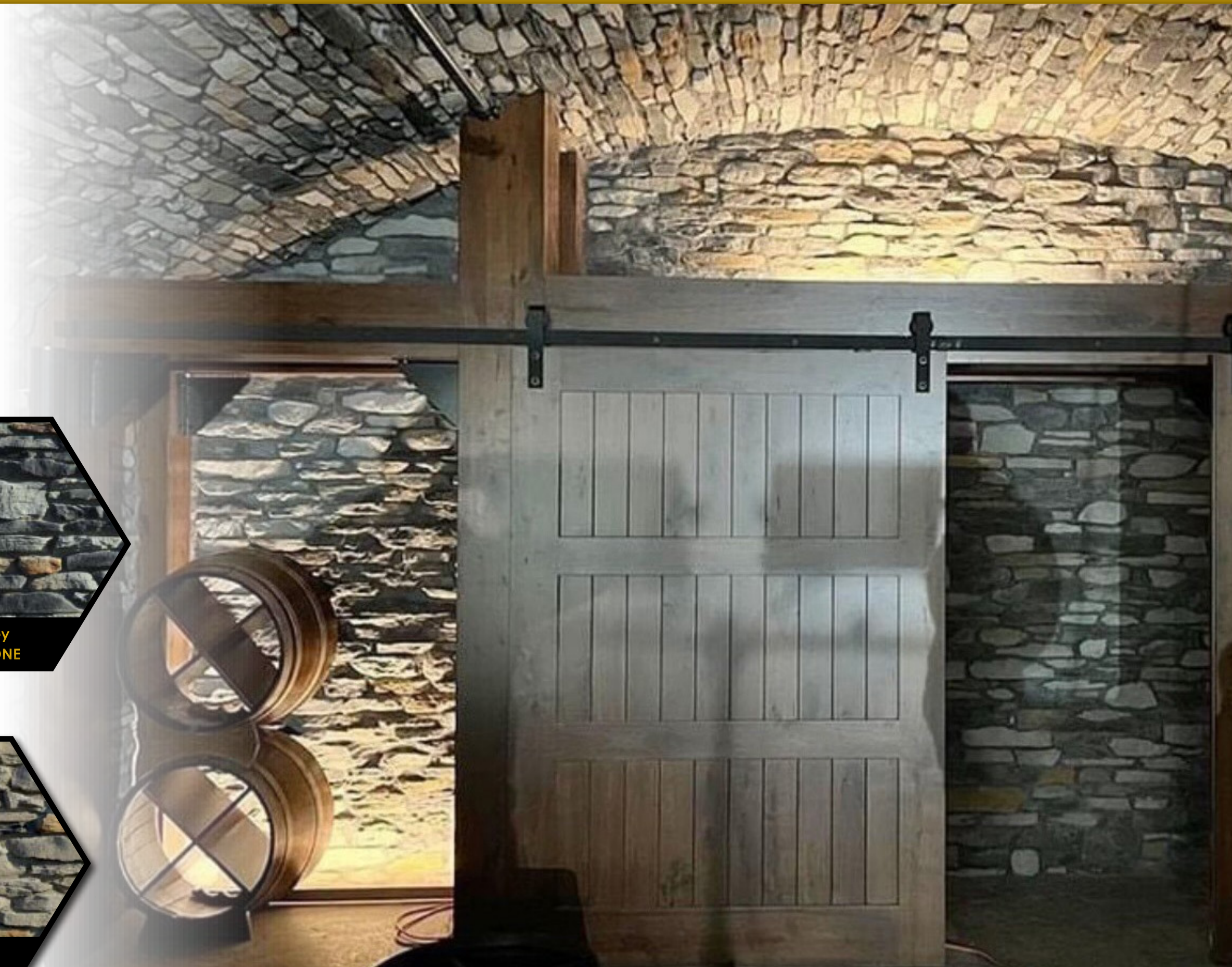
Monterey
LEDGESTONE



Harvest
LEDGESTONE



Santa Fe
LEDGESTONE



- Ledgestone ranges from 1½ inches to 6 inches tall, and 4 inches to 23½ inches long.

Quarry Cut

BLUEGRASS

- With a stylish and edgy feel, Quarry Cut fits the bill when you want a well-arranged look.
- Chic and cultivated with its stack ledge and smaller thin pieces, it brings you uniform lines and diverse color. Perfect for a distinct look to set your design apart.



Quarry Cut

PORTLAND MIST



- Quarry Cut ranges from 1 inch to 4½ inches tall, and 3 inches to 23½ inches long.

Dressed Ashlar

WHITE ONYX

- Dressed Ashlar's straight lines and squared edges will give your next project a strong consistency that exudes culture and refinement.
- Dressed Ashlar ranges from 3 inches to 10 inches tall, and 6 inches to 15 inches long.



Braemar
DRESSED ASHLAR

Luna
DRESSED ASHLAR

Siesta
DRESSED ASHLAR

White Onyx
DRESSED ASHLAR

Southern Limestone

BRAEMAR

- Southern Limestone's traditional look gives projects a bold and strong appearance. They are a more natural cut, making it the perfect addition.



Portland Mist
SOUTHERN LIMESTONE



Luna
SOUTHERN LIMESTONE



Venice
SOUTHERN LIMESTONE



White Onyx
SOUTHERN LIMESTONE



Braemar
SOUTHERN LIMESTONE



Southern Limestone

BURNT RUSSET



Smokey
SOUTHERN LIMESTONE



Ohio
SOUTHERN LIMESTONE



Jackson Creek
SOUTHERN LIMESTONE



Charcoal
SOUTHERN LIMESTONE



Burnt Russet
SOUTHERN LIMESTONE



• Southern Limestone is approximately 2½ inches to 16 inches tall, by 5 inches and up to 23½ inches long.

Midwest Dimensional

SIESTA

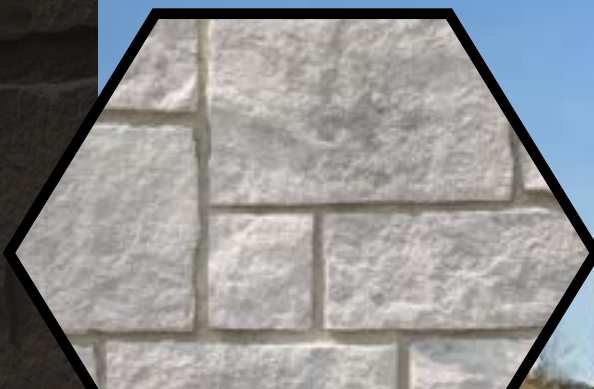
- Midwest Dimensional offers a natural yet classy appearance to any structure. The contrasting stone sizes give it a grande appearance. Each piece has a soft tone with only a slight variation in color and gentle edges.
- The Midwest series, with dark cool-toned roofing and frames to make a statement, or with softer, warm-toned features for a classic and smooth look.



White Onyx
MIDWEST DIMENSIONAL



Siesta
MIDWEST DIMENSIONAL



Luna
MIDWEST DIMENSIONAL



Pebble
MIDWEST DIMENSIONAL



Salvaged Wood Stone

NATURAL



Farmhouse
SALVAGED WOOD STONE



Natural
SALVAGED WOOD STONE

- Minutely detailed, Salvaged Wood Stone brings a fresh line to your space with its weathered details. The striking reclaimed texture of this stone will give your project the finish that it deserves.
- Salvaged Wood Stone has the following included in the box: (Not sold by the individual piece) 3- 8.5"x 32", 3- 7"x 32", 1- 8.5"x 20", 1- 8.5"x12", 1- 7"x 20", 1- 7"x 12"



Fieldstone

CHARCOAL

- Choosing a homey look with stone brings an exciting blend of variables to choose from. Our Fieldstone clarifies this style and brings it to the forefront. With a varied and irregular woodsy union of shapes, this series is a warm invitation to come home and unwind.
- Fieldstone ranges from 4 inches to approximately 22 inches.



Buck Country
FIELDSTONE



Tan
FIELDSTONE



Bluegrass
FIELDSTONE



Portland Smoke
FIELDSTONE

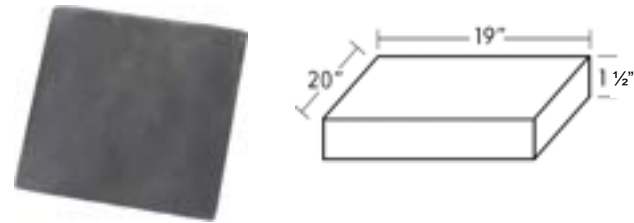


Charcoal
FIELDSTONE

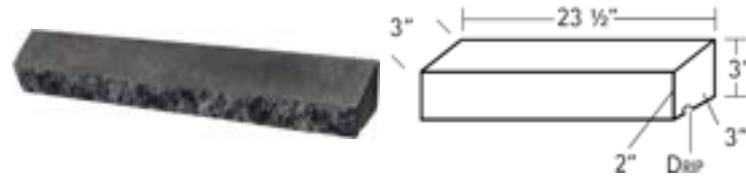


Accessory Sizing Guide

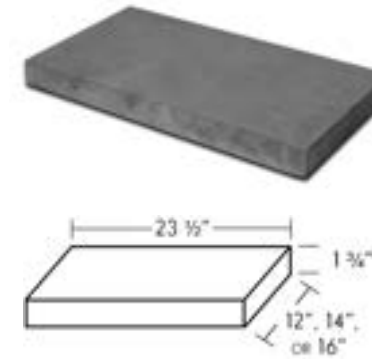
HEARTHSTONE



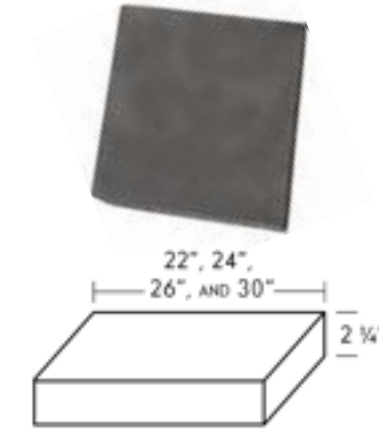
WATERTABLE SILL



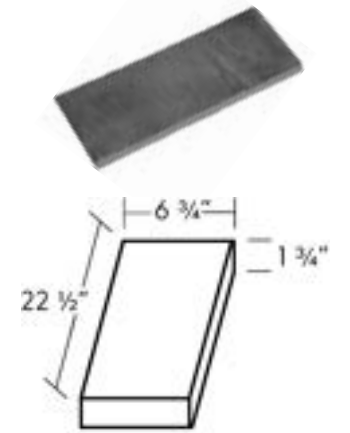
WALL CAP



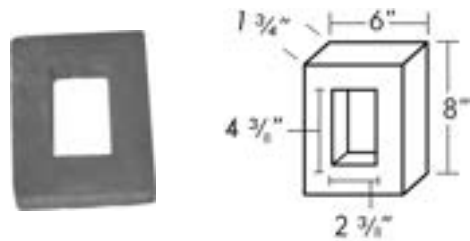
PIER CAP



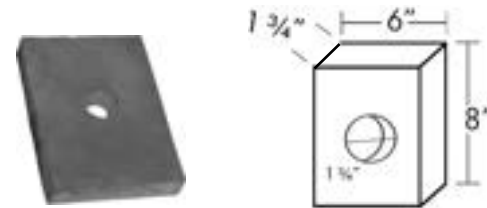
WINDOW TRIM



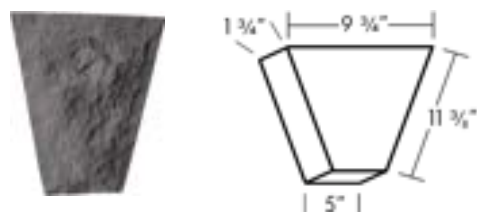
RECEPTACLE BLOCK



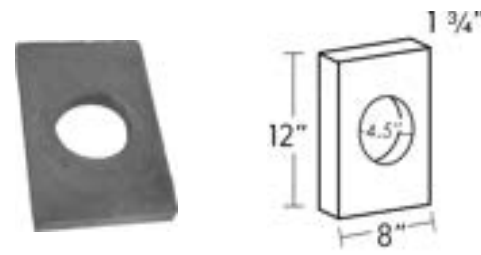
HYDRANT BLOCK



ROCKFACE KEYSTONE




LIGHT BLOCK



ROWLOCK



AVAILABLE COLORS

-  Brown
-  Charcoal
-  Tan
-  Gray
-  White
-  Black Onyx



Imperial Pro Stack with white Rowlocks and Water Table Sills

Color Reference Guide

WEATHERLEDGE



OLD COUNTY LEDGE



SOUTHERN LIMESTONE



LEDGESTONE



QUARRY CUT



FIELDSTONE



Color Reference Guide

PRO STACK



DRESSED ASHLAR



MIDWEST DIMENSIONAL



THIN VENEER BRICK



PLYM BRICK



SALVAGED WOOD STONE



HEARTHSTONE



WATERTABLE SILL



RECEPTACLE BLOCK



HYDRANT BLOCK



ROCKFACE KEYSTONE



Color Reference Guide

LIGHT BLOCK



ROWLOCK



WALL CAP



PIER CAP



WINDOW TRIM



ABOUT ME

Hello, I'm Paul Miller, the owner and CEO of Prestige Stone Products LLC. With a deep-rooted passion for challenge and adventure, I've dedicated over 32 years to excel in the stone and masonry industry and have proudly led Prestige Stone Products for the past decade.

With a singular vision- to make people's dreams come true- I have pursued excellence and adventure. Whether helping clients create their dream homes, fostering an extraordinary work environment, or having meaningful interactions with those I meet, my mission is to deliver excellence at every level.

At Prestige Stone Products, "Quality Craftsmanship is a Way of Life" isn't just a motto- it's a commitment. You might find me on the production line pulling stones, out on a sales call, demonstrating installation techniques, or even handling a service call. This hands-on approach ensures we consistently meet the highest standards and exceed expectations.

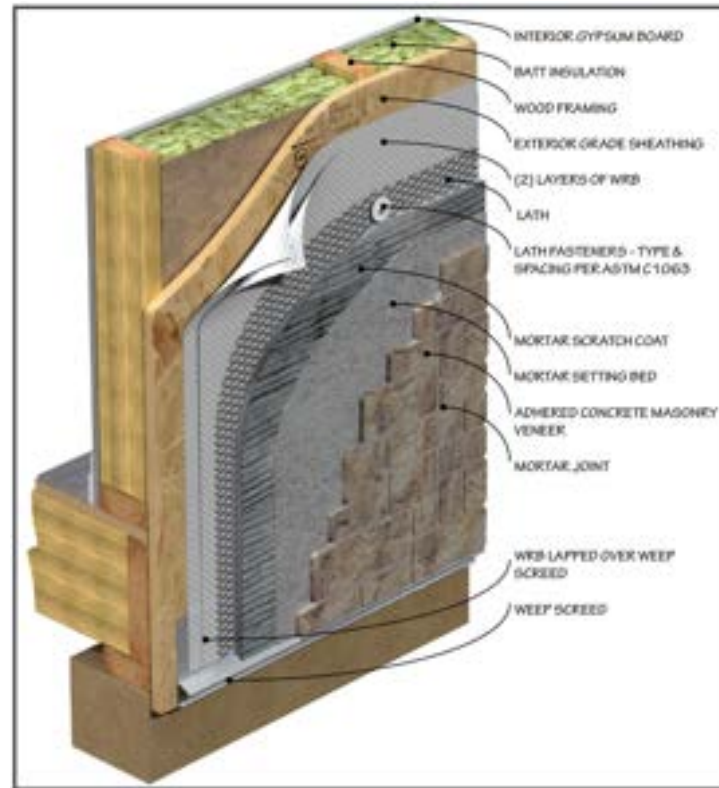
I am incredibly grateful for my team's dedication and shared passion for our vision. My team is more than just hired hands; they are trusted members of our community- to me, they are almost family. We are not only producing stone but also trust and lasting relationships.

On a personal note, I cherish spending time with my family and, surprisingly to some, enjoy playing with my grandkids. Racing high-performance motorcycles and hunting are my ways of embracing adventure and connecting with God and nature.

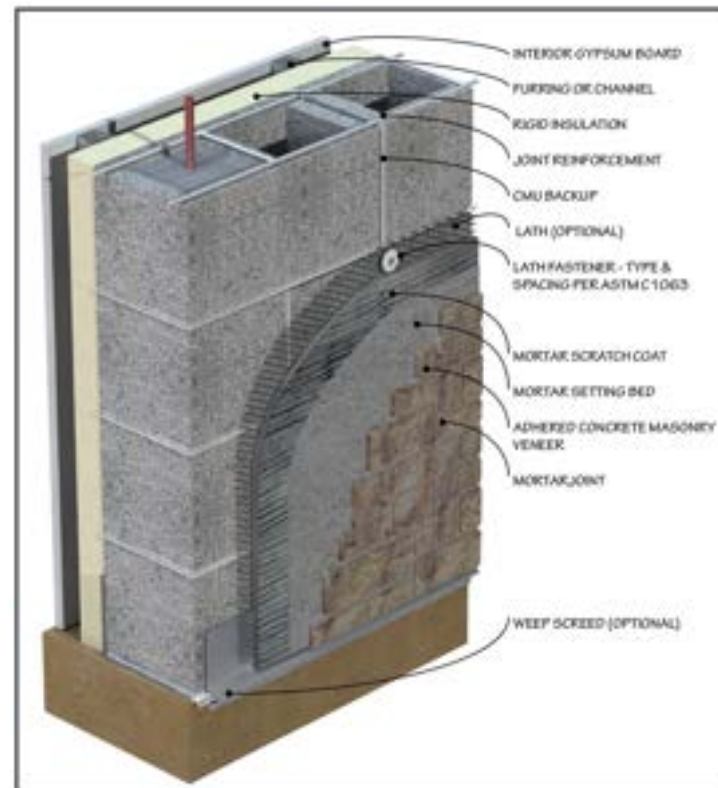
Let's connect and explore how we can transform your vision into reality.



1. INSTALLATION OVER WOOD FRAMING



2. INSTALLATION OVER CONCRETE MASONRY UNITS



APPLYING THE METAL LATH

Apply a moisture barrier of housewrap and 30 pound felt. Overlap horizontal joints 5 inches and vertical joints 8 inches. All corners must be wrapped a minimum of 16 inches. Then apply 2.5 pound metal lath or equivalent. Metal lath must be overlapped in the same manner as the felt. Fasten with wide crown staples at least 1 inch in length. Make sure all chimneys and windows are properly flashed.

APPLYING THE SCRATCH COAT

Apply a scratch coat using Type M or Type N mortar, approximately 1/4 inch to 1/2 inch thick. Make sure the mortar is not too wet or too dry.

APPLYING THE STONE

Install corners first. Spread mortar evenly on the back of the stone, approximately 1/2 inch thick. When applying the stone to the wall, move the stone back and forth a little bit in a circular motion. Make sure your mortar is not too dry or too wet for proper bonding. In hot weather you may need to wet down the back of the stone or the scratch coat.

GROUTING INSTRUCTIONS

Use a grout bag to grout the joints, making sure you do not get cement on the face of the stone. Let the grout joint set up until it is slightly dry, then strike the joint with a jointer or other similar implement. Make sure it isn't too wet or too dry. If the mortar wets or stains a brush it is too wet. Brush out the joints with a soft brush.

- 50 year Limited Warranty from the date of purchase, when installed to Manufacturer's instructions and according to local building codes. Warranty does not cover damaged product resulting from building settlement, wall movement, improper installation, or discoloration due to airborne contaminants.

- The Contractor and Architect are responsible for proper installation. Prestige Stone Products, LLC is not responsible for the structural wall surface it is applied to. Make sure to follow all of your local building codes. Building codes will vary from state to state, county to county.

- Warranty is subject to all other terms of the written warranty, a copy of which can be obtained from your dealer or by visiting:

www.prestigestoneproducts.com

SPECIAL CONSIDERATIONS FOR PRO STACK / TIGHT STACK INSTALLATIONS

Compared to other masonry installations where a grout joint is visible and surrounds each piece, tight fitting modular installations don't have a true grout joint reinforcement to lock in stone improving adherence. It is recommended to use a compliant Polymer Modified Mortar or bonding agent and proper installation techniques. A full, complete mortar setting bed is mandatory and will provide an effective seal behind and around the stone. Joint installations using regular type mortars don't experience such adherence deficiencies because the grout serves as an additional bonding area around the edges of each veneer piece and tends to lock each piece in place. Grout seals the area surrounding each veneer piece from water infiltration to the back of the veneer. If water collects in the voids behind the veneer and freezes, expansive forces can cause the veneer to disengage.

SUMMARY

Choose the proper mortar. Standard type S or N Mortar is suitable for jointed grouted veneer. For a Pro Stack type application use a polymer Modified Mortar complying with ANSI A118.4 or ANSI A118.15 Or equivalent, or a liquid bonding agent.

Ensure that wall bonding surfaces and back of the veneer are free of dust, laitance, loose concrete particles, and any film that could impede a bond.

When applying Type S or N mortar, wet the scratch coat and back of each veneer piece. Check the mortar manufacturer's recommendations regarding "wetting" when using polymer modified mortar.

Mix mortar with proper amount of sand and water to form proper consistency for maximum adherence.

Completely butter each veneer piece, (1/2") and work firmly into place.

Ensure complete mortar setting bed coverage and full perimeter. "Squeeze out"

If necessary, use a mortar application method in which mortar is troweled onto the scratch coat, and also back buttered onto the veneer.

Do not dislodge previously installed veneer. Mortar bond may be compromised.

SET THE VENEER SECURELY

This cannot be emphasized enough- the veneer must be pressed firmly into the mortar setting bed, and onto the scratch coat and worked delicately back and forth with a slight rotating action. You must achieve mortar squeeze out in a volume that results in full mortar setting bed covering the scratch coat and the back of the veneer completely. Over "buttering" will also effect bond efficacy. Once the veneer has set it should not be dislodged or the bond may be compromised. Care should be taken to avoid inadvertent movement after the initial set, especially with tight fit installations where veneer pieces are intentionally touching each other.

2025



9290 Winesburg Road
Dundee, OH 44624
www.prestigestoneproducts.com
330.439.5318

